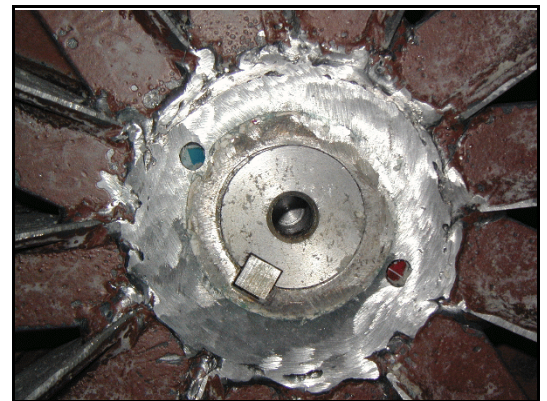
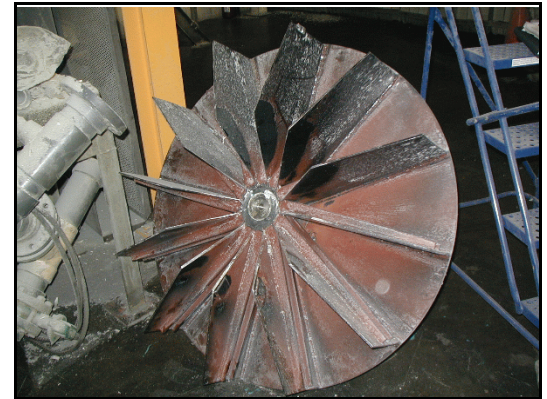


# Buffalo HT Fan has the solution



## Buffalo HT Fan wheel design replaces competitor's dangerous exploding wheels !!!

- A large worldwide paper products manufacturer was experiencing problems with a paper trim handling fan. Replacement fan wheels (top photo) were exploding without warning.
- The fan was originally a large Buffalo Forge Type CB. When the original wheel wore out, it was replaced several times with wheels built by a local repair shop that kept failing.
- Due to the danger from wheels exploding suddenly, the customer had to keep personnel away from the area. Additionally, production rates suffered when the fan was frequently shut down for inspection.
- In an attempt to get by, the customer had the repair shop inspect and reweld the wheels every 1 -2 weeks. The wheels still kept failing.
- Buffalo HT Fan personnel were asked to help. We inspected a wheel, and determined that the existing wheel design and workmanship were the cause of the failures. Their stiffener design didn't adequately support the blades to keep them from bending back, and the welds were poor throughout with a lack of penetration, undercuts, and little or no weld in critical areas of the wheel.
- A close up view of their hub (middle photo) shows some of the poor welding. Eight (8) of the 12 blades are already tearing loose from the hub. This wheel was removed just prior to it flying apart like previous ones.
- Shown at right is the 100% full welded Buffalo HT Fan designed wheel built by our ASME Section IX certified welders. Features include high strength knife edge blades, and a shroudless, non-clogging design.



©COPYRIGHT 2008 BUFFALO HT FAN CO. INC.

**For cost effective solutions to your fan problems, call us today. We can help.**

Buffalo HT Fan Company, Inc.  
P.O. Box 1955, Buffalo, NY 14219-1955  
Phone: (800) 657 9182 Fax: (800) 657 9435 E-mail: [sales@buffalohtfan.com](mailto:sales@buffalohtfan.com)

**Your best source for engineered OEM replacement fan equipment, fan repair & rebuilding, & dynamic balancing.**